

Model EA 470 and 630 Series Filter Presses

For use in a wide variety of applications, ErtelAlsop offers Model EA 470 and 630 Series Filter Presses. Supplied with lightweight, economical polypropylene plates, these filters are ideal for processes that require 0.5 to 12 cubic feet of solids handling. With gasketed plates standard, these heavy-duty presses are exceptionally suited for all applications where leak-free processing is required. As with all ErtelAlsop plate and frame filter press models, media is available for any application and/or operating condition. Product testing is always available either at your facility, through our international network of reps and distributors, or at our in-house laboratory.

Standard Features

- A36 Steel Skeleton
- 304 SS Side Bar Wear Strips
- Schedule 80 PVC Head Connections
- Four (4) Corner Discharge
- Standard 32mm CGR Polypropylene Plates
- Semi-Automatic Hydraulic Closure System
- Full Six Year Framework Warranty

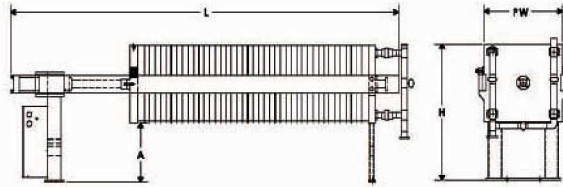


EA 470 Shown

Optional Features

- Recessed Chamber Plates
- Flush Plate and Frames
- Membrane/Squeeze Plates
- Various Plate Materials Available
 - Aluminum, Stainless Steel, Kynar, High Temperature Polypropylene
- Uniform Fill Manifold
- Cake Cart
- Cake Chute
- Leg Extensions
- Elevated Platforms
- Safety Lanyard
- Stainless, Aluminum & Carbon Steel Head Connections
- Splash Curtains
- Safety Gate
- Safety Light Curtain
- Bombay Doors/Drip Tray
- AOD Feed Pump
- Automatic Pump Controller
- Blanking Plate
- Thorough Wash Capability
- Expansion Capability
- Alternating Discharge (1B & 3B)
- Automatic Air/Oil Hydraulic Closure System
- Cake Thickness from 20-50 mm
- Membrane Water Squeeze System

A complete line of filter media is available for all ErtelAlsop filter presses, for any application and/or operating condition.



Model	A Clearance	L Length	H Height	PW Width	Press Volumes
EA 470	25 inches	50-120 inches	44.25 inches	22.5 inches	0.5-5 ft ³
EA 630	25 inches	70-260 inches	50.25 inches	30 inches	3-12 ft ³

Model EA 470/630 Specifications (32mm Cake Thickness)

PLATES:

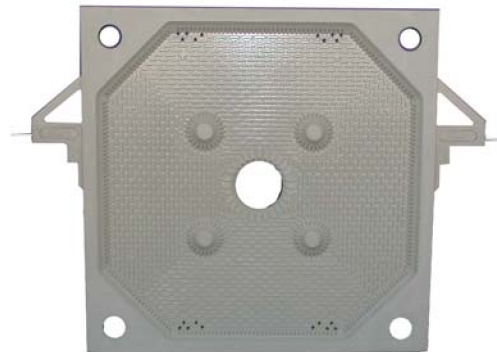
Plate Dimension:	EA 470: 470mm/18.5 inches	EA 630: 630mm/24.8 inches
Discharge Ports:	EA 470: 4 Corner	EA 630: 4 Corner
Std Vol./Chamber:	EA 470: .15 ft ³	EA 630: .29 ft ³
Std Area:	EA 470: 3.4 ft ²	EA 630: 6.37 ft ²

PRESSES:

Std Height:	EA 470: 1124mm/44.25 inches	EA 630: 1276mm/50.25 inches
Std Width:	EA 470: 572mm/22.5 inches	EA 630: 762mm/30 inches
Range of Length:	EA 470: 1270-3048mm/50-120 inches	EA 630: 1778-6604mm/70-260 inches

Applications Include:

- Chemical Processing
- General Industrial
- Municipal/Industrial Wastewater
- Food & Beverage
- Pharmaceutical
- Petrochemical
- Environmental Remediation
- Metals/Minerals



Product testing is always available, either at your facility or at our in-house laboratory.

Distributed by:



Carl Stuart Limited

ADVANCED APPLIED TECHNOLOGIES

Contact Us:

Irl Ph: 01 4523432

UK Ph: 08452 30 40 30

Web: www.carlstuart.com

Email: info@carlstuart.com